

Plugin Manager User's Manual



An insight to creating custom Plugins

by Alexi Kamzamalov

Table of Contents

What is the PlugIn Manager.....	2
PlugIn Information 'Panel'.....	3
Detecting the Installation Registry Key	3
Registry Entries	
Deleting a Registry Key	4
Deleting a Registry Key(s) with a matching pattern	5
Deleting a Registry Value	6
Deleting Registry Value(s) with a matching pattern	7
Files & Folders	
Deleting a File	8
Deleting File(s) with a matching pattern	9
Deleting a Key from an .INI file	10
Deleting a Folder	11
Detect Process	12

What is the PlugIn Manager?

The PlugIn Manager is a Tool designed to be used in conjunction with **Privacy Killer v2** and above. Instead of being limited with the program selection we provide you with, the PlugIn Manager allows you to create your own custom history cleaning PlugIn(s). It only takes a few minutes to make a PlugIn. Once you *save it, there is nothing else to be done as it will automatically be added to the Privacy Killer PlugIns list.

The PlugIn will have a file extension ending with '.pkp' which will be associated with the PlugIn manager.

A '.pkp' file will contain instructions for Privacy Killer so that it would know what actions to take according to its information.

By default Privacy Killer v2 comes with 50 readymade PlugIns to use.

If you would like to download more PlugIns or even submit and share your own PlugIns with the Privacy Killer community, then simply visit: <http://www.privacykiller.com/PlugIns>

Please Note:

The PlugIns installed by Default from the Installation have been tested on our systems to ensure that they function properly and correctly. But we cannot guarantee that these PlugIns will work for each updated version of the corresponding program, as software developers can change configurations which may result in the PlugIn looking in the wrong path(s).

Important Note:

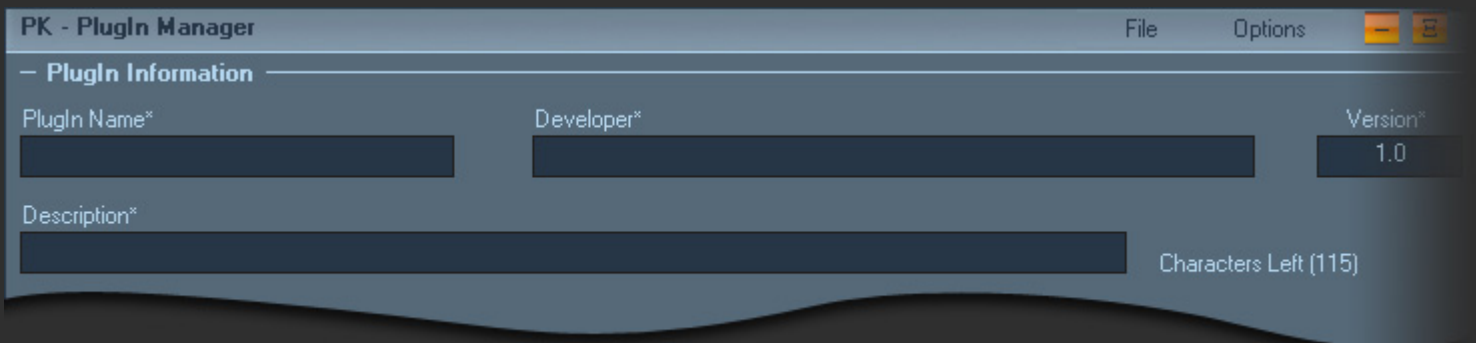
If you edit any of the Default PlugIns which are added from the Installation file, then we 'SelinSoft' cannot be held responsible for any loss of data or damage which may cause to a system due to the use of these PlugIns. The PlugIn Manager has been designed to prevent the user from adding special Windows® locations for deletion, which are crucial for the Operating System to run.

Note:

We cannot and do not provide any technical support for external PlugIns. If you need assistance on creating a PlugIn for certain software, then you should get in touch with the Developer and ask them for any paths & locations as they would be the right people to help you and not us or you may visit our Online Discussion Forum, where other Privacy Killer users may be able to help you: <http://www.forum.privacykiller.com>

*The PlugIns must be saved inside the folder called 'PlugIns' within the application directory.

Plugin Information



PK - Plugin Manager

File Options

– Plugin Information

Plugin Name* Developer* Version*

Description* Characters Left (115)

Fig. 1

To begin creating your Plugin, you will need to start off by entering the Plugin details in the 'Plugin Information' section.

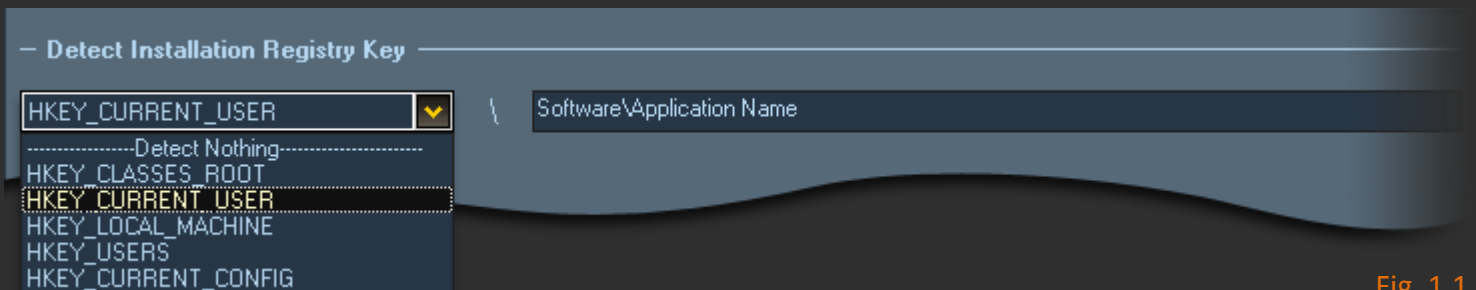
Plugin Name – Give your Plugin a Name.

Developer – Type in the name of who ever is creating the Plugin. (Note: *If left empty, our company name will be added instead.*)

Version – By default '1.0' is assigned as the Plugin version number. After each modification of the Plugin, it is recommended that you increase the Version number, so that you can keep track of your Plugin.

Description – You should type in a description for your Plugin. This should normally describe what the Plugin is and what it does etc... (This is the description which is displayed in the Privacy Killer – Main window, once the mouse is over the Plugin from the Plugins list.)

Detecting the Installation Registry Key



– Detect Installation Registry Key

HKEY_CURRENT_USER

-----Detect Nothing-----

HKEY_CLASSES_ROOT

HKEY_CURRENT_USER

HKEY_LOCAL_MACHINE

HKEY_USERS

HKEY_CURRENT_CONFIG

Software\\Application Name

Fig. 1.1

This option allows you to detect if a certain application is installed in the system. It checks if a given Registry Key exists. This is very useful because then the Plugins list within Privacy Killer wouldn't be filled up with unnecessary program names which actually wouldn't be used because the software is not installed on your system. So in order for Privacy Killer to list the Plugins which are relevant to your system, it is advised that you type in the Registry Key of the software you are trying to make a Plugin for.

Note:

The 'Detect Installation Registry Key' feature is optional. This field is not mandatory but for ease of use, it is advised that you do not leave it empty.

It's really easy adding a Registry Entry. To start, simply click on the **Add New** button (fig 2) under the **Registry Options** heading and this will launch the 'Registry' window.

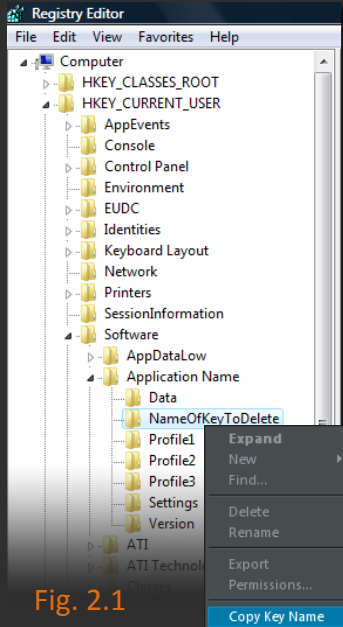


Fig. 2.1

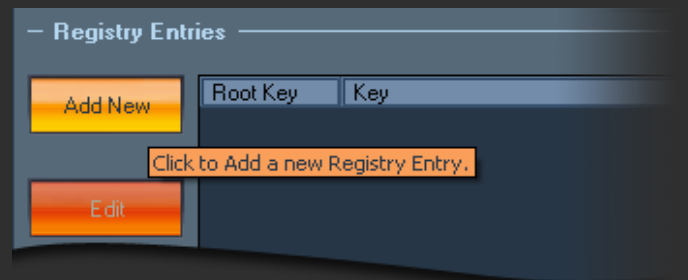


Fig. 2

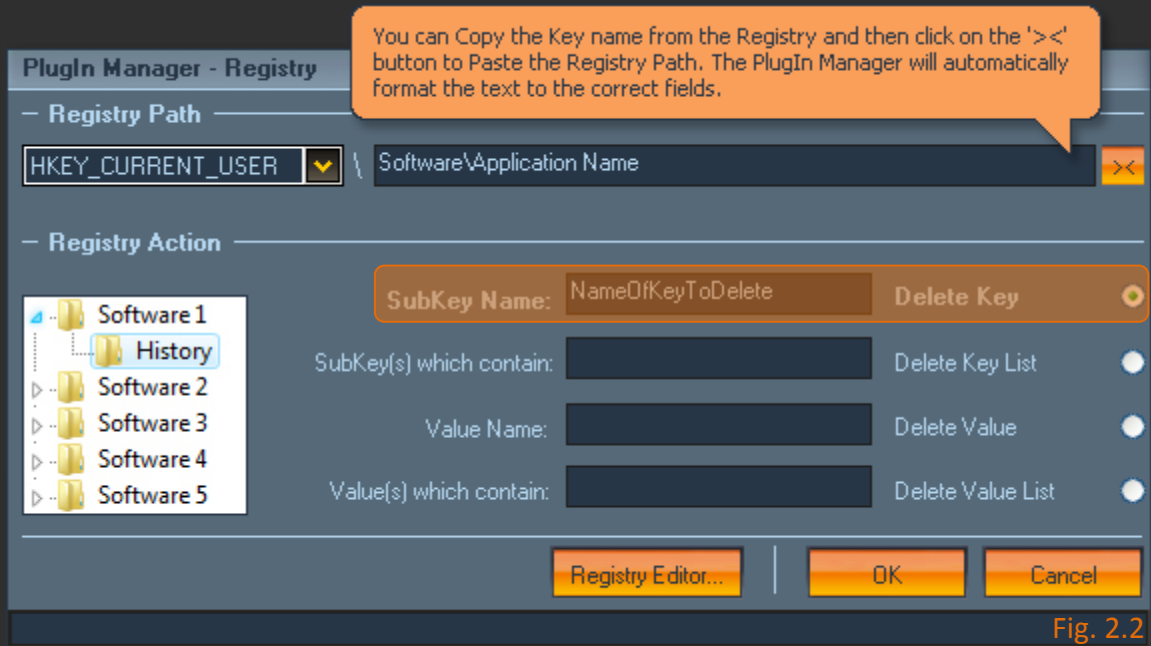



Fig. 2.2

Ok let's get started. Assuming you wish to delete the following Key from the registry (fig 2.1):

HKEY_CURRENT_USER\Software\Application Name\NameOfKeyToDelete

There are two ways to add this data to our 'Registry' window. One way is to simply type in the path in to the fields. This however may result in mistyping the path or name etc...

Therefore the best and recommended way is to simply right-click on the Key you wish to delete from the Registry and select the 'Copy Key Name' option. This would copy the key path on to the clipboard. You can then simply paste this data

(*ctrl + v*) in to the 'Registry Path' field or by clicking on the  button (fig 2.2). This would automatically format the data in to the correct fields. Once the setup is correct, then click on the 'OK' button to get back to the main screen.

Note:

By now you should already have some knowledge about the Registry. However it is not advised for you to be playing around with the Registry if you are not very familiar with it, otherwise you may corrupt some programs and even the Operating System itself.

How to access the Registry Editor:

The quickest option is to simply click on the **Registry Editor** button from the 'Registry' window, as shown in fig 2.2

The manual way is to click on the **Start** button and select **Run** or simply press **Windows Key + R**. This should open the 'Run' Dialog. Type in **regedit'** (without the quotes) and click OK. This should launch the Registry Editor.

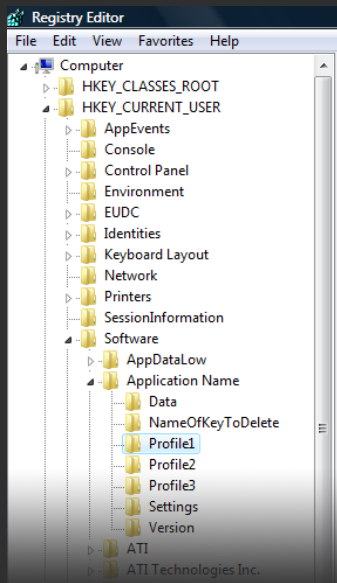


Fig. 3

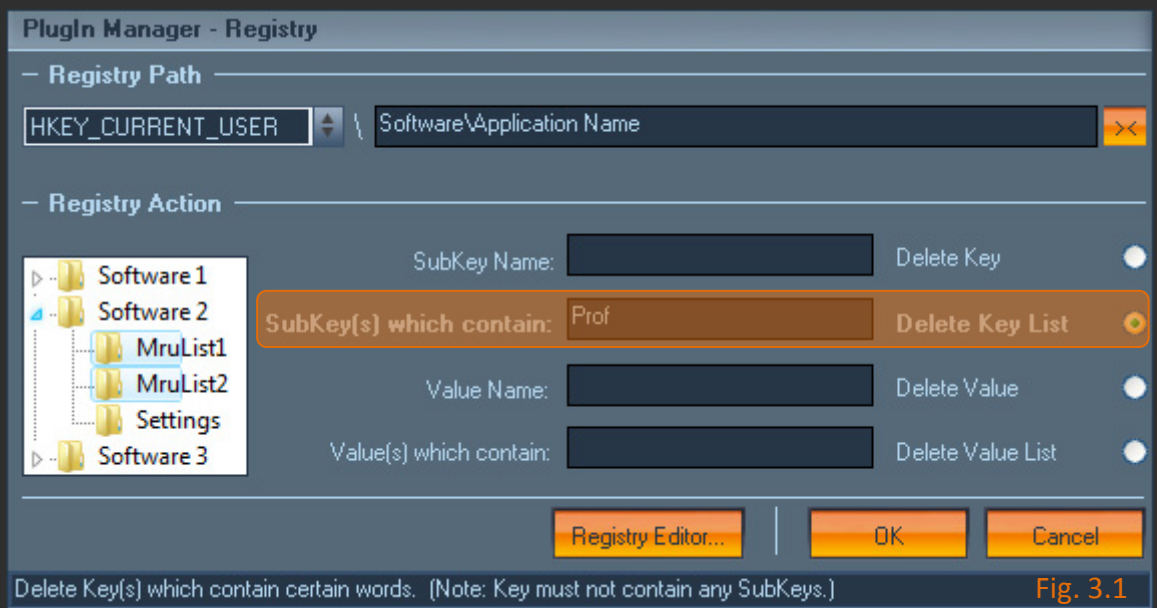


Fig. 3.1

Assuming you wish to Delete a sequence of keys, which all contain partially the same name. Let's consider the following scenario.

An application creates profiles for different users or settings. Since they're all named the same with an incremented number (fig 3), you can then type in a few characters for the PlugIn Manager to match (fig 3.1) and for each key name that contains the phrase 'Prof', it will delete it.

The result of fig 3.1 is described below and shows what it will delete, since the phrase 'Prof' matches the following 3 Sub Keys, then they will be deleted.

- HKEY_CURRENT_USER\Software\Application Name\Profile1*
- HKEY_CURRENT_USER\Software\Application Name\Profile2*
- HKEY_CURRENT_USER\Software\Application Name\Profile3*

Tip:

If you leave the field empty, then all empty sub keys will be deleted from the 'Registry Path' key. *i.e. Every empty sub key from 'Application Name' will be deleted .*

Note:

The Key(s) to be deleted must NOT contain any sub keys within them and if they do, Privacy Killer will skip and not delete them.

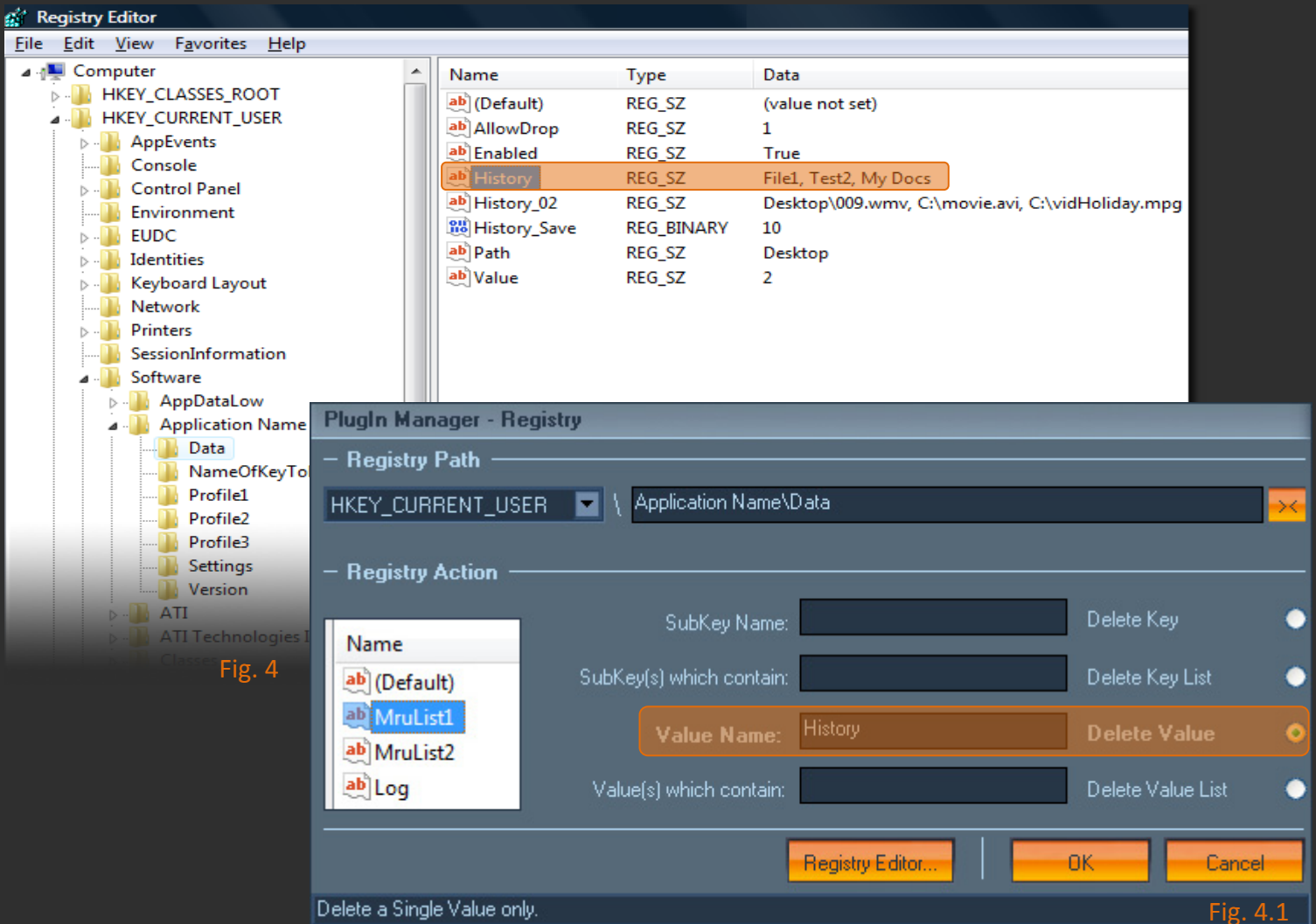


Fig. 4

Fig. 4.1

Deleting a value from the registry is really easy. Assuming you wish to delete the following Value from the registry (fig 4):

HKEY_CURRENT_USER\Software\Application Name\Data, "History"

The way the data should be formatted is shown in (fig 4.1).

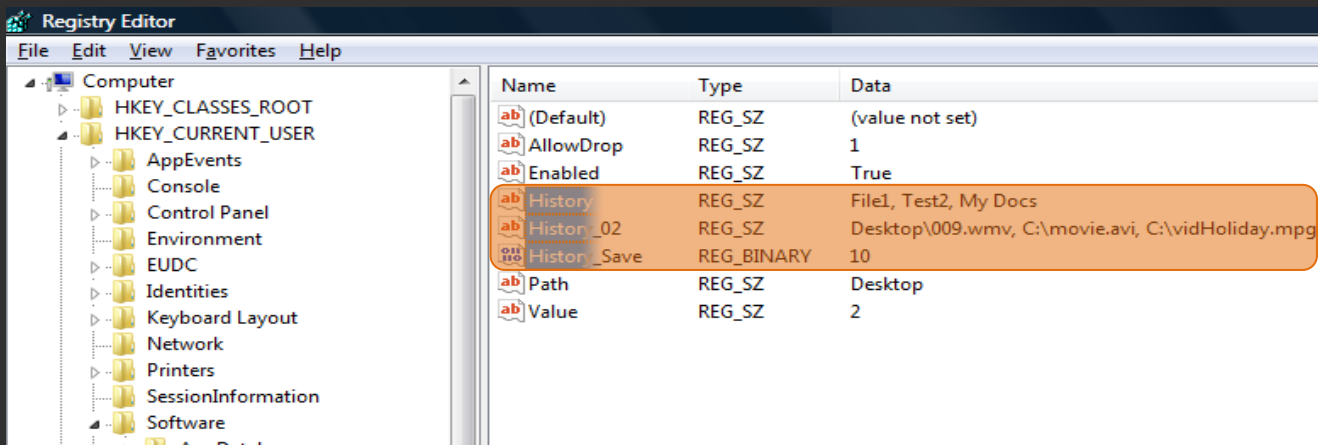


Fig. 5

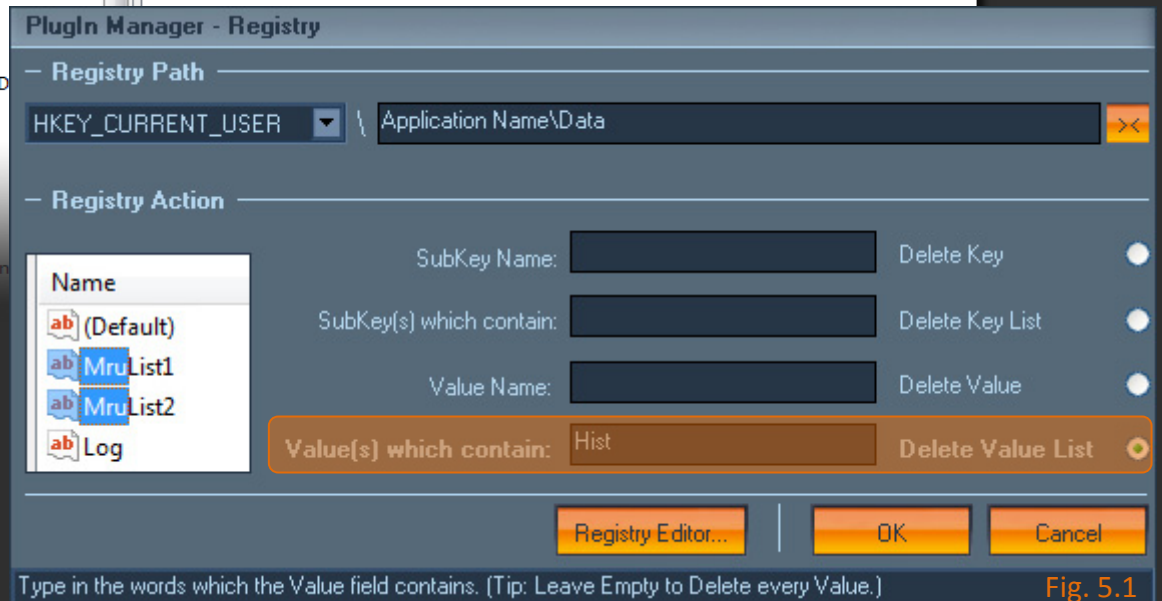


Fig. 5.1

Deleting registry value(s) with a matching pattern uses the same principle as for deleting sub key(s) with a matching pattern.

Assuming you wish to Delete a sequence of values, which all contain partially the same name. Let's consider the following scenario.

A Key contains data which a program uses to store different types of history data, which remembers your opened files.

The result of [fig 5.1](#) is described below and shows what it will delete, since the phrase 'Hist' matches the following three Values, they will be deleted.

HKEY_CURRENT_USER\Software\Application Name\Data, 'History'
HKEY_CURRENT_USER\Software\Application Name\ Data, 'History_02'
HKEY_CURRENT_USER\Software\Application Name\ Data, 'History_Save'

Tip:

You can leave the field empty and instead of deleting values which match a certain word or phrase, it will delete every Value (*the whole list*) inside that Key.

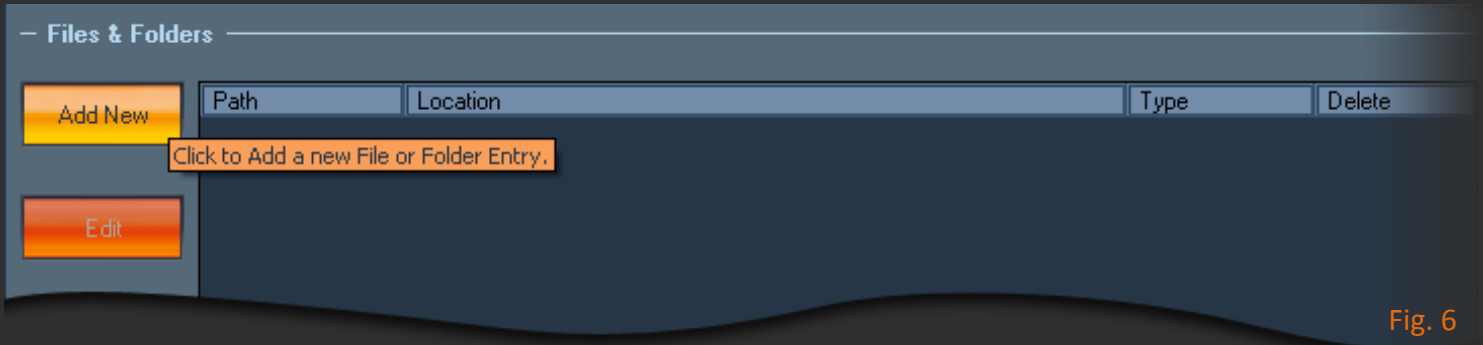


Fig. 6

It's really easy adding a File or a Folder to be deleted. To start, simply click on the 'Add New' button (fig 6) under the Files & Folders heading and this will launch the 'File & Folder Manipulation' window.

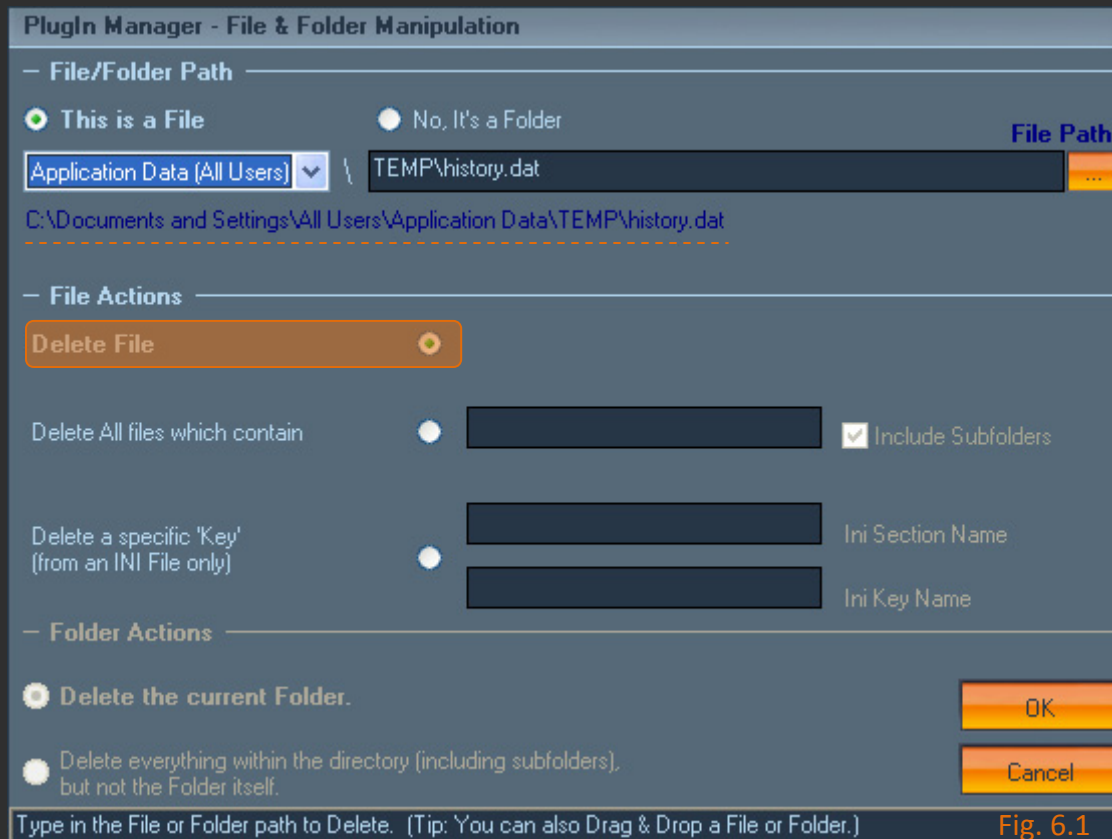


Fig. 6.1

The best and simple way of adding a File or Folder to be deleted is to simply drag & drop the file or folder in to the 'File & Folder Manipulation' window and it will automatically detect the source path and also detect whether it is a File or a Folder that you just dropped.

If however you wish to add a File manually, then you can do so. You can either select through the special Windows® paths from the drop down list or you can browse the File by clicking on the ... button.

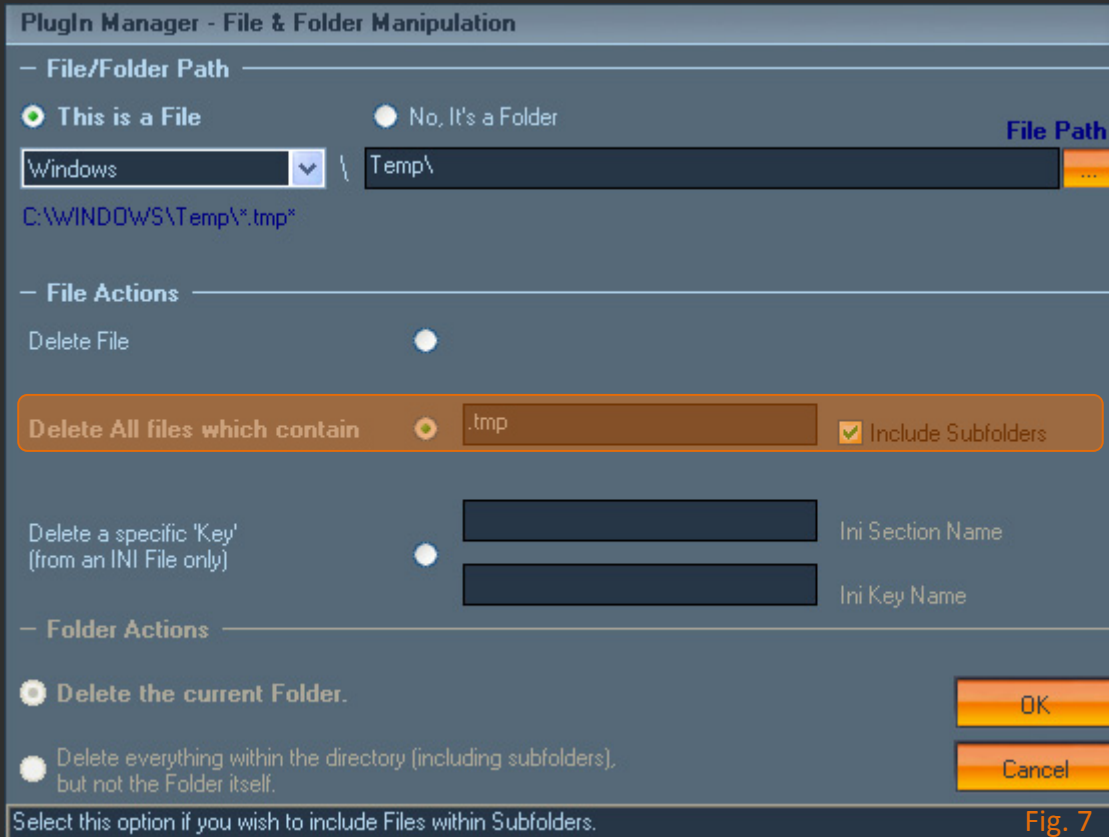
The above example (fig 6.1) shows that the following File (full path is displayed above the dotted line) should be deleted.

C:\Documents and Settings\All Users\Application Data\TEMP\history.dat

Tip:

You can simply drag & drop a File or Folder and the 'File & Folder Manipulation' window would automatically detect it.

You can also instruct it to delete files which are partially matched. For instance, you want to delete all left over temporary files from the Temporary directory. Simply drag & drop the 'C:\Windows\Temp' folder on to the *File & Folder Manipulation* window and then select the **second option** as highlighted below in (fig 7).



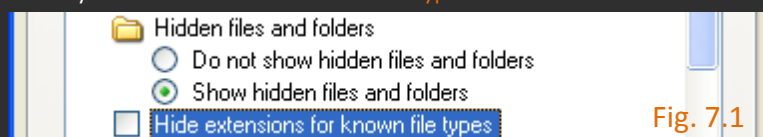
In this case we want to get rid all the files with the '.tmp' extension. Type in '.tmp' (without the quotes) as shown above and then if you want Privacy Killer to scan & look inside Subfolders, then tick the checkbox next to it.

The above example will delete all files which contain the phrase '.tmp' in their file name(s).

How to display the File Extension for Files:

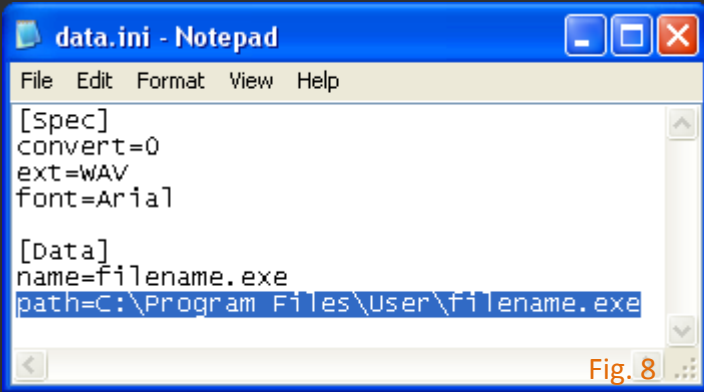
If you cannot see the File extension of a File, then you will need to make them visible, by opening any explorer window. For example:

- Open 'My Computer'
- Click on the 'Tools' Menu, followed by 'Folder Options...'
- Click on the 'View' tab
- Scroll down (fig 7.1) and Uncheck where it says: Hide extensions for known file types



90% of the time you will be dealing with Files, but some programs store their data in '.ini' files. These files have a special structure, therefore the PlugIn Manager allows you to delete a specific key from an .ini file.

Assuming you wish to delete the following key (*fig 8*):



Drag & drop the .ini file or browse for it so that you specify the file path.

Click on the 3rd option from the 'File Action' section.

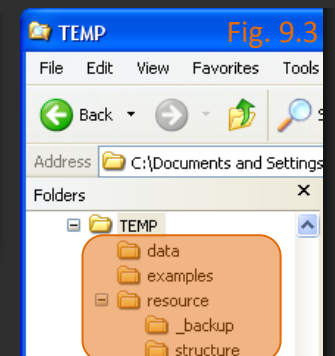
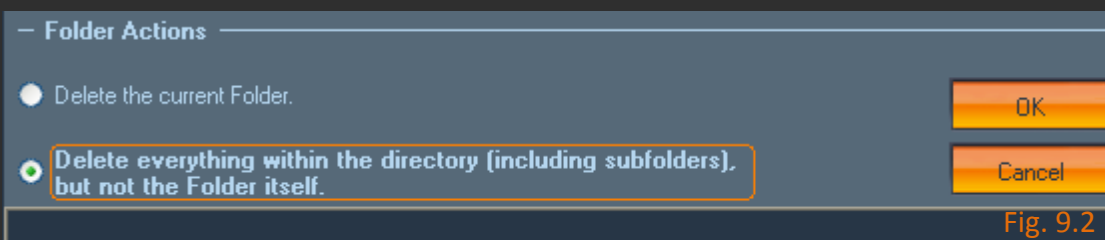
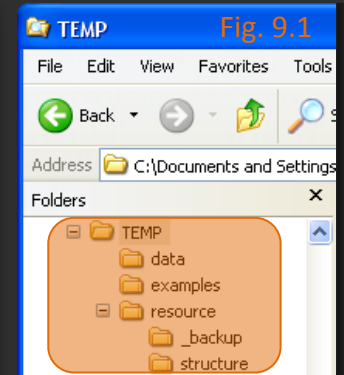
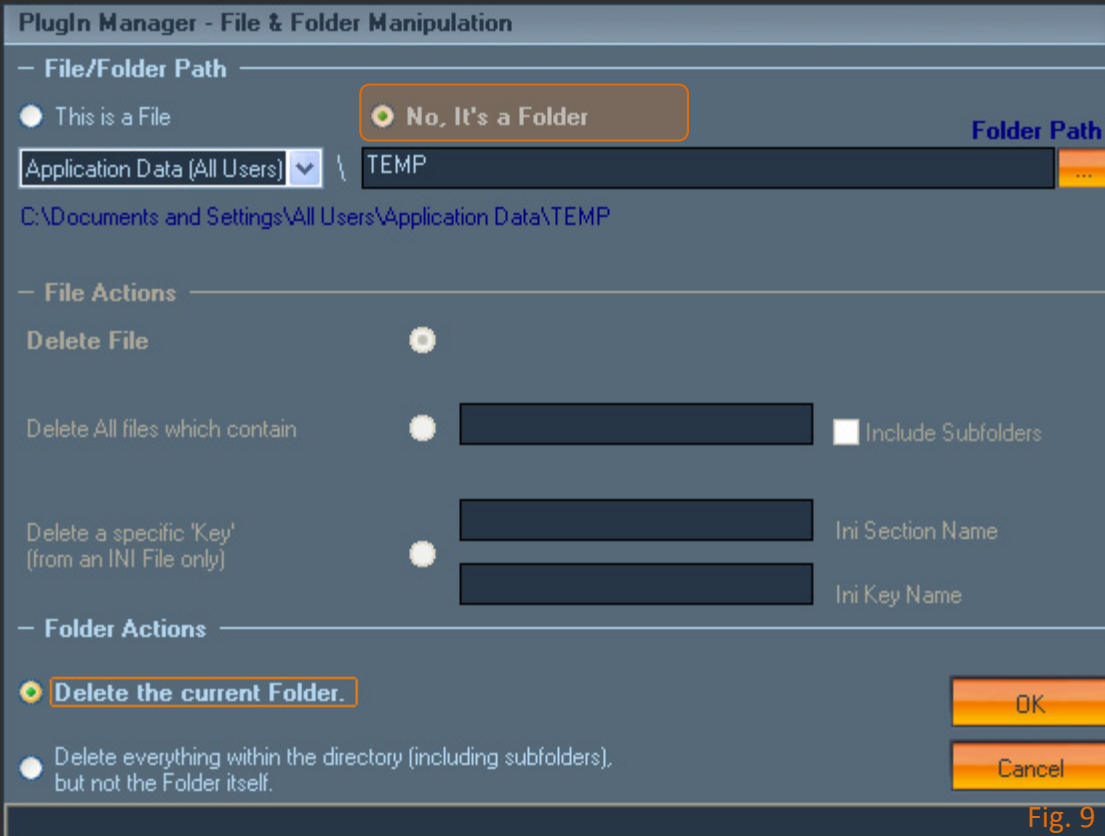
Then specify the *Section Name* and the *Key Name* as shown below, (*fig 8.1*).



The above example (*fig 8.1*) will delete the 'path' section from the .ini file, as highlighted above (*fig 8*).

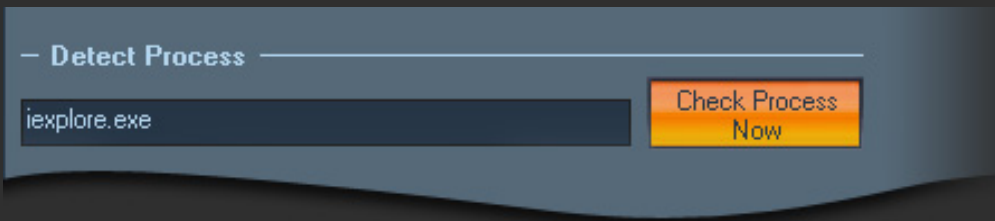
To delete a folder, you can either drag & drop the folder on to the 'File & Folder Manipulation' window and it will automatically detect it, or if you did it manually, you would have to first of all select the 'No, It's a Folder' option and then browse for the folder.

So the first option, from the Folder Actions pane will be automatically selected. This option will delete everything within the directory and the folder 'TEMP' itself, as shown below, in (fig 9). As for a visual demonstration (fig 9.1) highlights the directory structure, and it shows what will be deleted.



The second option, as show in (fig 9.2) will delete every file & folder inside this directory, but not the folder 'Temp' itself. Another way of describing it would by looking at the following example, (fig 9.3). The highlighted folders will be deleted, but not the 'TEMP' folder itself.

Detect Process



Yet another powerful feature built in to the PlugIn Manager, is the ability to check for running task(s). Most applications require that you close them before being able to delete their history otherwise

their MRU (*Most Recently Used List*) will be rewritten when the application is closed. Therefore this feature enables Privacy Killer to check if the given process name(s) are currently running and depending on your Preferences inside of Privacy Killer, it would either ask you what to do if the Process name(s) are detected running or it could skip the PlugIn and not clean its contents.

Tip:

You can also detect multiple running processes. Simply split each process name by a comma ‘,’. i.e. iexplore.exe, appName2.exe, etc...

Note:

The ‘Detect Process’ feature is optional. This field is not mandatory but may be required for some applications.

THE END

Web:

<http://www.privacykiller.com>

© SelinSoft 2008. All rights reserved.